

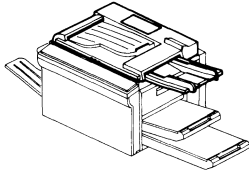
DF51

(A418)

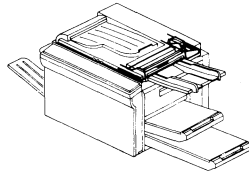
DF51

Location of Unit	3
1. DF I (A418)	4
2. DF II (A418)	6
3. DF III (A418)	8
4. DF Main Board (A418)	10
5. DF Harness (A418)	12
Parts Index	16

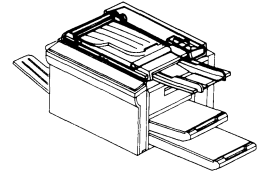
1. DF I

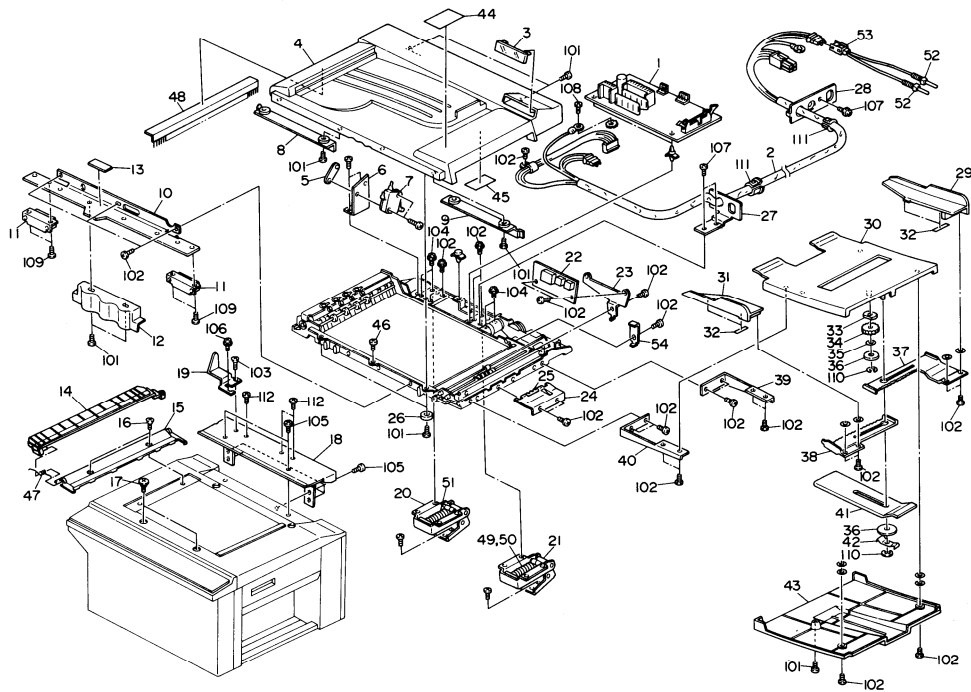


2. DF II



3. DF III





1. DF I (A418)

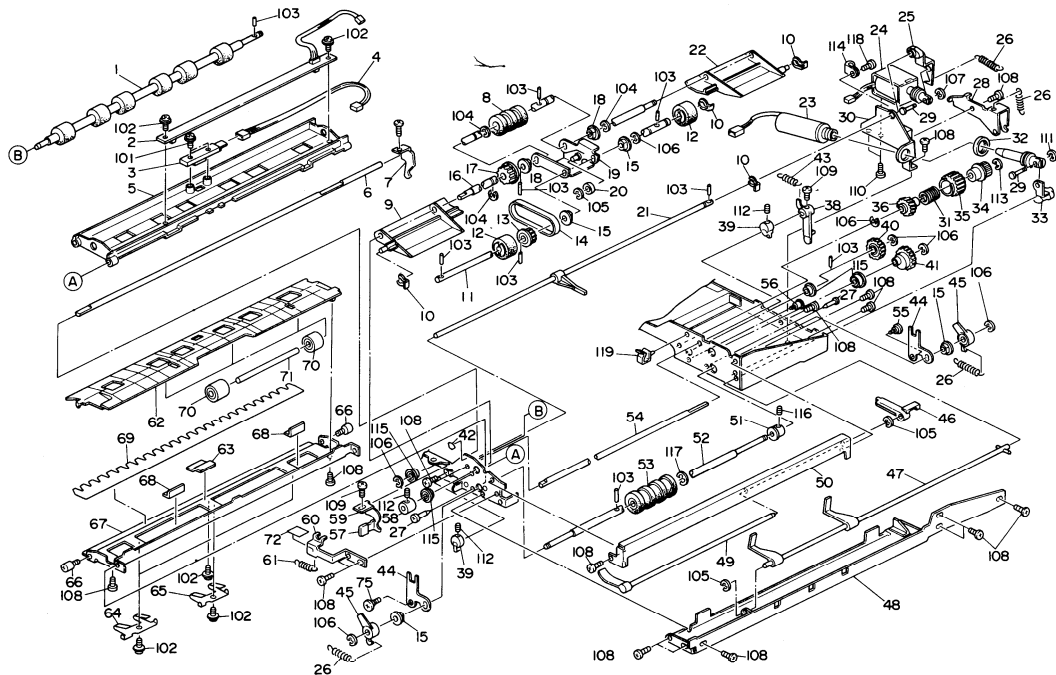
August 31, '89

Index No.	Part No.	Description	Q'ty Per Assembly
*	A418 8610	Installation Procedure - English	1
*	A418 8615	Installation Procedure - 5 Language	1
1	A418 5615	DF Main Board	1
2	A418 5804	Interface Harness	1
3	A418 1234	Display Panel	1
4	A418 1230	DF Cover	1
5	5056 0509	Nut Plate - Micro Switch	1
6	A418 1144	Bracke Switch Bracket	1
7	1204 1319	Micro Switch	1
8	A418 1231	Left Supporter	1
9	A418 1232	Right Supporter	1
10	A418 1154	Grip Plate	1
11	5936 2480	Magnetic Catch Ass'y	2
12	A418 1236	Glip - Cover	1
13	5918 3394	Seal - 15x30mm	1
14	A418 3117	Glip Scale - LT/LDG	1
14	A418 3127	Flip Scale - A3/A4	1
15	A418 1180	Original Exit Guide	1
16	A419 3877	Shoulder Screw - Scale	2
17	5875 5510	Shoulder Screw - M5	2
18	A418 1307	DF Fixing Plate	1
19	A418 1295	Lift Switch Actuator Plate	1
20	A418 1290	Left Hinge	1
21	A418 1270	Right Hinge	1
22	A418 5621	Display Board	1
23	A418 1237	Display Board Bracket	1
24	A418 1251	Original Table Guide	1
25	5918 2725	Mylar - Feed-in	1
26	5886 3114	Roller Cover	2
27	A418 1160	DF Harness Bracket	1
28	A418 1300	Interface Harness Bracket	1
29	A418 1254	Rear Original Guide	1
30	A418 3217	Original Feed Table - LT/LDG	1
30	A418 3227	Original Feed Table - A3/A4	1
31	A418 1253	Front Original Guide	1

Index No.	Part No.	Description	Q'ty Per Assembly
32	5894 2747	Mylar - Original Guides	4
33	A418 1260	Cork Pad	1
34	5443 2657	Gear - 28T	1
35	5443 2713	Wave Washer	1
36	5443 2660	Spacer - 6x22x0.5mm	2
37	A419 2728	Rack - Rear Original Guide	1
38	A419 2726	Rack - Front Original Guide	1
39	A418 1262	Rear Table Bracket	1
40	A418 1261	Front Table Bracket	1
41	A418 1255	Original Table Extender	1
42	5918 2770	Extender Spring Plate	1
43	A418 1252	Original Table Cover	1
44	A418 1801	Decal - Misfeed Removal	1
44	A418 1805	Decal Jan Removal	1
45	A418 4002	Decal - DIP Switch	1
46	5918 3040	Shoulder Screw - M4	1
47	A418 1153	Spring - Flip Scale	1
48	A418 1185	Austatics Brush	1
49	A418 1271	Right Hinge Spring - Outer	2
50	A418 1272	Right Hinge Spring - Inner	2
51	A418 1291	Left Hinge Spring	2
52	A418 5807	Fiber Optics Harness	1
53	A418 5701	Fiber Connector	1
54	A418 1241	Display Panel Bracket	1

Index No.	Part No.	Description	Q'ty Per Assembly
101	0344 0060D	Philips Truss Head Screw - M4x6	
102	0314 0060W	Philips Pan Head Screw - M4x6	
103	0324 0120W	Philips Sunken Head Screw - M4x12	
104	0314 0100W	Philips Pan Head Screw - M4x10	
105	0315 0100W	Philips Pan Head Screw - M5x10	
106	0951 4010W	Philips Screw With Flat Washer - M4x10	
107	0434 0080W	Tapping Screw - M4x8	
108	0314 0080W	Philips Pan Head Screw - M4x8	
109	0313 0160W	Philips Pan Head Screw - M3x16	
110	0720 0040E	Retaining Ring - M4	
111	1106 0134	Universal Bushing - 2.4mm	
112	0434 0060W	Tapping Screw - M4x6	

Index No.	Part No.	Description	Q'ty Per Assembly



2. DF II (A418)

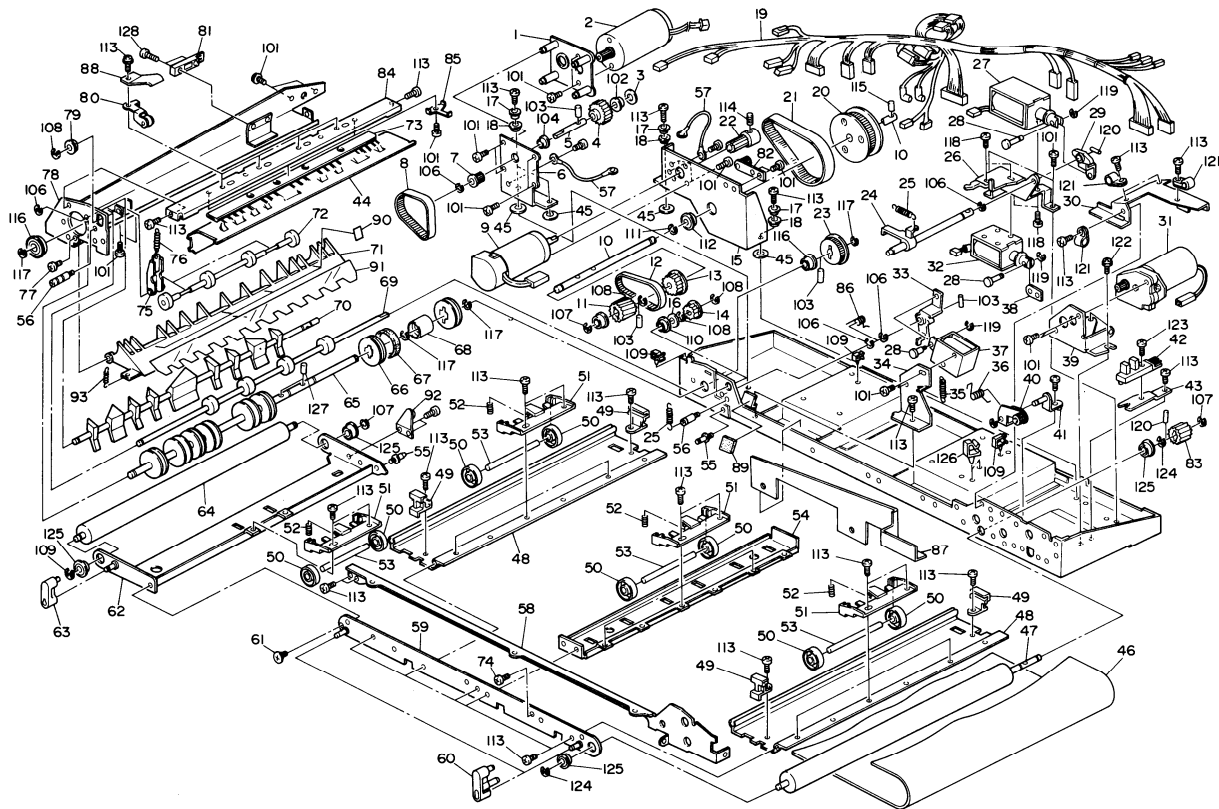
August 31, '89

Index No.	Part No.	Description	Q'ty Per Assembly
1	5918 2155	Registration Roller	1
2	5918 5631	Paper Suze Sensor	1
3	5918 5722	Photosensor	1
4	5918 5821	Registration Sensor Harness	1
5	5918 2520	Upper Feed-in Guide	1
6	5918 2168	Release Lever Shaft	1
7	5918 2172	Rear Release Lever	1
8	5894 2181	Upper Separation Roller	1
9	A418 2230	Front Feed-in Guide	1
10	5447 2681	Snap Ring	3
11	5918 2220	Pick-up Roller Shaft	1
12	5894 2171	Original Feed Roller	2
13	5918 2223	Pulley - 24T	1
14	5894 2174	Timing Belt	1
15	5053 0447	Bushing - 6mm	4
16	5918 2224	Feed Roller Shaft	1
17	5894 2186	Separation Roller Pulley	1
18	5053 0223	Bushing - 8mm	2
19	5918 2215	Pick-up Roller Bracket	1
20	5894 2163	Center Roller	1
21	5918 2375	Pick-up Control Shaft	1
22	A418 2231	Rear Feed-in Guide	1
23	5918 5501	Stopper Solenoid	1
24	5918 5515	Pick-up Solenoid	1
25	5918 2371	Pick-up Lever	1
26	5894 2176	Spring - Detent Arm	4
27	5446 2824	Screw - Duplex Guide Plate	2
28	5918 2373	Stopper Bracket	1
29	5894 2229	Solenoid Pin	1
30	5918 2370	Pick-up Solenoid Bracket	1
31	5918 2163	Clutch Spring	1
32	A418 1159	Spacer - M4.5x1	1
33	5918 2372	Stopper Lever	1
34	5918 2158	Pulley - 25T	1
35	5918 2164	Clutch Sleeve	1

Index No.	Part No.	Description	Q'ty Per Assembly
36	5918 2159	Gear - 24T	1
38	5918 2340	Release Arm	1
39	5918 2105	Eccentric Cam	1
40	5918 2156	Gear - 24T	1
41	5918 2230	Gear - 45T	1
42	5918 2781	Decal - Feed-in	1
43	5894 2293	Spring - Original Stopper	1
45	5918 2106	One Way Bearing Lever	2
46	5918 2250	Sensor Actuator	1
47	5918 2150	Feed-in Stopper	1
48	A419 3355	Right Frame	1
49	5918 2260	Feed-in Sensor Feeler	1
50	5918 2252	Right Stay	1
51	5894 2264	Collar	1
52	5918 2101	Separation Roller Shaft	1
53	5894 2183	Lower Separation Roller	1
54	5918 2103	Eccentric Cam Shaft	1
55	5413 2298	Stepped Screw - M4	2
56	5403 2049	Spring Anchor	1
57	A411 2531	Knob Cap	1
58	5918 2210	Collar - 6mm	1
59	5918 2170	Front Release Lever	1
60	5918 2108	Adjusting Plate	1
61	5201 2832	Feed Clutch Spring	1
62	5918 2610	Lower Feed-in Guide	1
63	5918 2624	Seal - 12x17x0.7mm	1
64	5918 2615	Spring Plate	2
65	5918 2616	Middle Spring Plate	1
66	5413 1875	Knob Screw	1
67	5918 2621	Entrance Guide	1
68	5875 5501	Sensor Pad	2
69	5918 2623	Paper Guide Mylar	1
70	5894 2412	Roller	6
71	5894 2413	Relay Roller Shaft	3
72	A418 2226	Rubber Seal - 10x10x3	1

Index No.	Part No.	Description	Q'ty Per Assembly
75	A418 2102	Front Adjusting Plate	1
76	A418 2103	Rear Adjusting Plate	1

Index No.	Part No.	Description	Q'ty Per Assembly
101	0965 3010W	Tapping Screw With Flat Washer - M3x10	
102	0965 4006W	Tapping Screw - M4x6	
103	0632 0100E	Pin - 2x10mm	
104	0720 0060E	Retaining Ring - M6	
105	0720 0030E	Retaining Ring - M3	
106	0720 0050E	Retaining Ring - M5	
107	0720 0025E	Retaining Ring - M2.5	
108	0314 0060W	Philips Pan Head Screw - M4x6	
109	0313 0060W	Philips Pan Head Screw - M3x6	
110	0313 0040W	Philips Pan Head Screw - M3x4	
111	0720 0025E	Retaining Ring - M2.5	
112	0574 0040E	Hexagon Headless Set Screw - M4x4	
113	0720 0040E	Retaining Ring - M4	
114	1105 0005	Nylon Clip - 3N	
115	0805 3145	Ball Bearing - 6x12x4mm	
116	0574 0040E	Hexagon Headless Set Screw - M4x4	
117	0720 0070E	Retaining Ring - M7	
118	0965 4008W	Tapping Screw With Flat Washer - M4x8	



3. DF III (A418)

August 31, '89

Index No.	Part No.	Description	Q'ty Per Assembly
1	A409 1198	Rear Side Plate - Exit Drive	1
2	A409 1234	Exit Motor - DC 9W	1
3	A409 1197	Spacer - 10x16x1.6mm	1
4	A409 1201	Gear - 46T	1
5	A409 1195	Exit Drive Shaft	1
6	A418 1142	Front Side Plate - Exit Drive	1
7	A409 1192	Pulley - 15T	1
8	A409 1191	Timing Belt - 83mm	1
9	5936 5501	Transport Drive Motor - DC 21W	1
10	A418 1055	Middle Drive Shaft	1
11	5918 2317	Gear - 19T	1
12	5918 2314	Timing Belt - MM63	1
13	5918 2313	Pulley - 30T	1
14	A409 1161	Pulley - 21T	1
15	A418 1141	Motor Bracket	1
16	A418 1158	Spacer - M6.5x1	1
17	A418 1145	Collar - M6	4
18	A418 1146	Rubber Bushing - M6	4
19	A418 5811	Main Harness	1
20	5918 2295	Pulley - 79T	1
21	5918 2316	Timing Belt - P2M 208	1
22	5918 2270	Pulley - 15T	1
23	A409 1143	Pulley - 50T	1
24	5918 2330	Clutch Lever	1
25	5408 3253	Spring - Detent Arm	2
26	5918 2324	Solenoid Bracket	1
27	5918 5525	Registration Solenoid	1
28	5894 2229	Solenoid Pin	3
29	5918 2325	Stopper Lever	1
30	5918 2385	Harness Bracket Ass'y	1
31	5918 2349	Feed-in Motor Ass'y - DC24V	1
32	5918 5516	Release Solenoid	1
33	5918 2372	Stopper Lever	1
34	A409 1154	Bracket - Inverter Gate Solenoid	1
35	A409 1153	Spring - Inverter Guide Plate	1

Index No.	Part No.	Description	Q'ty Per Assembly
36	5918 2289	Spring	1
37	A409 5511	Inverter Solenoid	1
38	5918 2327	Release Lever	1
39	5918 2355	Feed-in Motor Bracket	1
40	5918 2274	Timing Belt Tightener	1
41	5918 2285	Tightener Stud	1
42	5215 5230	Photointerrupter - L-Type	1
43	5918 2380	Sensor Bracket	1
44	A418 1140	Exit Guide Plate	1
45	A418 1147	Seal - M10x1	4
46	A419 1120	Original Feed Belt	1
47	5918 3369	Belt Drive Roller	1
48	5918 1556	Belt Stay	2
49	5918 3382	Belt Stopper	2
50	5918 3381	Floating Roller	18
51	5918 3383	Holder - Floating Roller	3
52	5918 3380	Spring - Floating Roller	9
53	5875 1540	Shaft - Floating Roller	9
54	5918 3385	Belt Unit Stay	1
55	5918 3125	Stud - M4	1
56	A409 1150	Spring Anchor	2
57	A418 5821	Grounding Wire	2
58	A409 1133	Front Frame	1
59	5918 3395	Front Belt Unit Plate	1
60	5918 3007	Belt Unit Holder - A	2
61	5413 2298	Stepped Screw - M4	1
62	5918 3365	Belt Release Bracket	1
63	5918 3092	Belt Unit Holder - B	1
64	5918 3370	Belt Roller	1
65	A409 1142	Turn Roller Shaft	1
66	5936 2542	Turn Pulley	8
67	A418 9001	Turn Roller Ring (8pcs/set)	8
68	A409 1162	Collar - Inverter Solenoid	1
69	5918 3536	Exit Roller	1
70	A409 1152	Inverter Gate	1

Index No.	Part No.	Description	Q'ty Per Assembly
71	A409 1149	Guide Plate - Inverter	1
72	A418 1163	Idle Roller	1
73	5918 3562	Antistatic Brush	1
74	5413 1882	Step Screw	1
75	A409 1147	Idle Roller Arm	2
76	5446 6365	Spring - Discharge Roller	2
77	5446 2824	Screw - Duplex Guide Plate	1
78	A418 1139	Left Frame	1
79	5053 0447	Bushing - 6mm	1
80	5918 3585	Upper Exit Roller	4
81	5918 5722	Photosensor	1
82	A418 1148	Belt Tightener	1
83	5918 2318	Gear - 19T	1
84	A409 1138	Exit Roller Bracket	1
85	A409 1139	Clamp - Discharge Brush	2
86	A409 1156	Spring - Lever - Reverse	1
87	A418 1129	Harness Cover	1
88	A418 1186	Grounding Plate	1
89	A418 1240	Cushion 21x20x2	1
90	A418 1164	Mylar Seal 15x12x0.1	4
91	5918 2623	Paper Guide Mylar	1
92	A418 1125	Belt Unit Stopper	1
93	A418 3253	Spring - Inverter Guide Plate	2

Index No.	Part No.	Description	Q'ty Per Assembly
101	0313 0060W	Philips Pan Head Screw - M3x6	
102	0742 3905	Ball Bearing - 5x13x4mm	
103	0632 0100E	Pin - 2x10mm	
104	0741 3505	Ball Bearing - 5x10x4mm	
105	0314 0040W	Philips Pan Head Screw - M4x4	
106	0720 0030E	Retaining Ring - M3	
107	0720 0050E	Retaining Ring - M5	
108	0720 0040E	Retaining Ring - M4	
109	1105 0087	Clamp	
110	0741 3506	Ball Bearing - 6x12x4mm	
111	0720 0070W	Retaining Ring - M7	
112	0805 3291	Ball Bearing - 8x16x5mm	
113	0314 0060W	Philips Pan Head Screw - M4x6	
114	0574 0040E	Hexagon Headless Set Screw - M4x4	
115	0633 0160E	Pin - 3x16mm	
116	0742 3808	Ball Bearing - 8x16mm	
117	0720 0060E	Retaining Ring - M6	
118	0313 0040W	Philips Pan Head Screw - M3x4	
119	0720 0025E	Retaining Ring - M2.5	
120	0632 0100G	Pin 2x10mm	
121	1105 0016	Nylon Clip - 4N	
122	0951 4006W	Philips Screw With Flat Washer - M4x6	
123	0314 0100W	Philips Pan Head Screw - M4x10	
125	0805 3145	Ball Bearing - 6x12x4mm	
126	1105 0108	Nylon Clip	
127	0633 0120E	Spring Pin - M3x12	
128	0313 0080W	Philips Pan Head Screw - M3x8	

4. DF MAIN BOARD (A418)

August 31, '89

CAPACITOR

SYMBOL NO.	INDEX NO.
C101	141
C102	149
C103	143
C104	178
C105	179
C106	150
C107	148
C108	146
C109	151
C110	151

SYMBOL NO.	INDEX NO.
C111	145
C112	144
C113	142
C114	143
C115	152
C116	152
C117	154
C118	154
C119	154
C120	154

SYMBOL NO.	INDEX NO.
C121	154
C122	154
C123	154
C124	154
C125	154
C126	154
C127	154
C128	154
C129	154
C130	154

SYMBOL NO.	INDEX NO.
C131	154
C132	154
C133	154
C134	154
C135	154
C136	154
C137	166
C138	154
C139	154
C140	154

SYMBOL NO.	INDEX NO.
C141	154
C142	154
C143	154
C144	154
C145	154
C146	154
C147	180
C148	154
C149	154
C150	154

SYMBOL NO.	INDEX NO.
C151	180
DIP SWITCH	
SYMBOL NO.	INDEX NO.
DIP101	112

VARIABLE RESISTOR

SYMBOL NO.	INDEX NO.
VR101	136
VR102	136
VR103	137
VR104	139
VR105	139
VR106	138

CONNECTOR

SYMBOL NO.	INDEX NO.
CN101	103
CN102	102
CN103	104
CN104	107
CN105	105
CN106	4

FUSE

SYMBOL NO.	INDEX NO.
FU101	111
FU102	110
FU102	182
FU102	110

RESISTOR ARRAY

SYMBOL NO.	INDEX NO.
RAY101	135

IC

RESISTOR

SYMBOL NO.	INDEX NO.
IC101	176
IC102	116
IC102	5
IC103	175
IC104	7
IC105	121
IC106	6
IC106	109
IC107	174
IC108	129

SYMBOL NO.	INDEX NO.
IC109	123
IC110	120
IC111	129
IC112	124
IC113	125
IC114	127
IC115	129
IC116	128
IC117	119

SYMBOL NO.	INDEX NO.
R101	161
R102	177
R103	169
R104	133
R105	167
R106	169
R107	172
R108	134
R109	167
R110	170

SYMBOL NO.	INDEX NO.
R111	134
R112	171
R113	173
R114	168
R115	155
R116	161
R117	164
R118	155
R119	161
R120	161

SYMBOL NO.	INDEX NO.
R121	161
R122	161
R123	160
R124	160
R125	160
R126	160
R127	164
R128	164
R129	164
R130	164

SYMBOL NO.	INDEX NO.
R131	156
R132	158
R133	158
R134	158
R135	158
R136	163
R137	163
R138	161
R139	161
R140	161

SYMBOL NO.	INDEX NO.
R141	165
R142	161
R143	161
R144	161
R145	161
R146	161
R147	161
R148	161
R149	161
R150	161

SYMBOL NO.	INDEX NO.
R151	161
R152	161
R153	163
R154	163
R155	158
R156	158
R157	161
R158	161
R159	161
R160	161

SYMBOL NO.	INDEX NO.
R161	161
R162	161
R163	161
R164	157
R165	161
R166	161
R167	161
R168	161
R169	161
R170	157

LED

TEST POINT

DIODE

NOISE FILTER

OSCILLATOR

TRANSISTOR

SYMBOL NO.	INDEX NO.
R171	157
R172	157
R173	157
R174	157
R175	161
R176	161
R177	157
R178	157
R179	157
R180	157

SYMBOL NO.	INDEX NO.
R181	161
R182	157
R183	157
R184	157
R185	157
R186	165
R187	165
R188	165
R189	165
R190	181

SYMBOL NO.	INDEX NO.
R191	161
R192	159
SWITCH	
SYMBOL NO.	INDEX NO.
SW101	113
SW102	113

SYMBOL NO.	INDEX NO.
LED101	118
LED102	118
LED103	118
LED104	118
LED105	118
LED106	118

SYMBOL NO.	INDEX NO.
TP101	101
TP102	101
TP103	101
TP104	101
TP105	101
TP107	101

SYMBOL NO.	INDEX NO.
D101	
D102	117
D103	117
D104	117
D105	117

SYMBOL NO.	INDEX NO.
NF101	140

SYMBOL NO.	INDEX NO.
OSC101	130

SYMBOL NO.	INDEX NO.
Q101	114
Q102	115

4. DF MAIN BOARD (A418)

August 31, '89

Index No.	Part No.	Description	Q'ty Per Assembly
*	A418 5615	DF Main Board	1
4	A409 5710	Fiber Connector	1
5	5936 5221	Heat Sink	1
6	A418 5618	IC - M8M2764-30	1
7	A422 5350	IC - HCTL-3	1

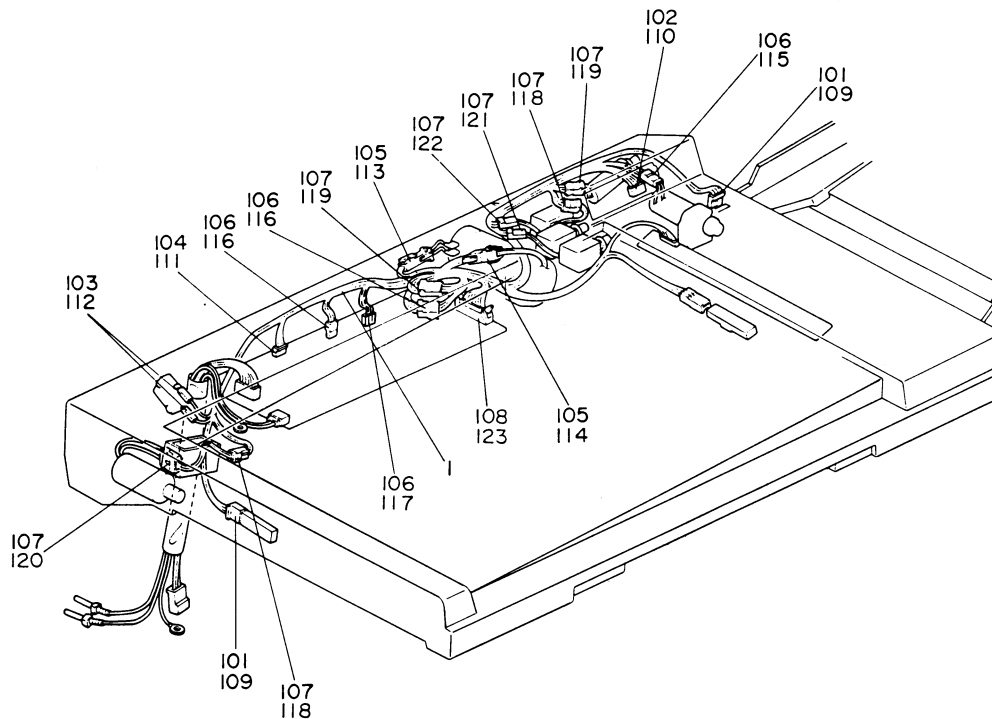
Index No.	Part No.	Description	Q'ty Per Assembly
101	1101 0328	Connector Pin Contact	
102	1102 0958	Connector - 2P	
103	1103 0881	Connector - 4P	
104	1103 1726	Connector - 4P	
105	1103 1728	Connector - 6P	
106	1103 1878	Connector - 2P	
107	1103 3023	Connector - 34P	
108	1103 3029	Connector - 2P	
109	1104 0271	LSI Socket - 42P	
110	1104 0333	Fuse Holder	
111	1107 0413	Fuse - 3A	
112	1204 0883	DIP Switch	
113	1204 1385	Push Switch	
114	1400 0100	Transistor - 2SA683	
115	1401 0282	Transistor - 2SB20	
116	1401 0329	IC - MP4503	
118	1403 0308	LED - TLR-102A	
119	1403 0388	Photocoupler - ON3111	
120	1407 0604	IC - TC4049BP	
121	1407 1026	IC - SN74LS373N	
123	1407 1334	IC - UPD7810G	
124	1407 1348	IC - TD62304P	
125	1407 1535	IC - TD62308AP	
127	1408 0408	IC - PST518A	
128	1408 0521	IC - M51971L	
129	1408 0578	IC - HA17339	
130	1503 0070	Ceramic Oscillator - 10MHz	
133	1600 0681	Resistor - 510OHM ± 5% 1W	
134	1601 1732	Resistor - 390OHM 1W	
135	1601 7326	Resistor Array - 10KOHM	
136	1601 8145	Variable Resistor - 5KOHM	
137	1601 8147	Variable Resistor - 10KOHM 0.5W	
138	1601 8148	Variable Resistor - 20KOHM	
139	1601 8157	Variable Resistor - 100KOHM	
140	1602 0953	Coil - 800µH 2.5A	

Index No.	Part No.	Description	Q'ty Per Assembly
141	1604 1358	Capacitor - 1000µF 10V	
142	1604 1378	Capacitor - 1µF 50V	
143	1604 1379	Capacitor - 2.2µF 50V	
144	1604 1380	Capacitor - 3.3µF 50V	
145	1604 1381	Capacitor - 4.7µF 50V	
149	1604 1390	Capacitor - 1000µF 50V	
150	1606 0658	Capacitor - 0.1µF 50V	
151	1606 1184	Capacitor - 27PF 50V	
152	1606 1348	Capacitor - 0.022µF 50V	
154	1606 1452	Capacitor - 0.01µF 50V	
155	1610 0035	Resistor - 100OHM 1/8W ±5%	
156	1610 0047	Resistor - 330OHM 1/8W ±5%	
158	1610 0057	Resistor - 1.5KOHM 1/8W ±5%	
159	1610 0061	Resistor - 2.2KOHM 1/8W ±5%	
160	1610 0065	Resistor - 3.3KOHM 1/8W ±5%	
161	1610 0067	Resistor - 4.7KOHM 1/8W ±5%	
163	1610 0071	Resistor - 10KOHM ±5%	
164	1610 0079	Resistor - 22KOHM 1/8W ±5%	
165	1610 0107	Resistor - 1MOHM 1/8W ±5%	
166	1610 0286	Capacitor - 100PF 50V ± 5%	
167	1611 4103	Resistor - 10KOHM 1/4T ±5%	
168	1611 4229	Resistor - 2.2OHM 1/4W ± 5%	
169	1611 4272	Resistor - 2.7KOHM 1/4T ±5%	
170	1611 4330	Resistor - 330OHM 1/4T ±5%	
171	1611 4393	Resistor - 39KOHM 1/4T ±5%	
172	1611 4472	Resistor - 4.7KOHM 1/4T ±5%	
173	1611 4563	Resistor - 56KOHM 1/4T ±5%	
174	1407 0602	IC - TC4040BP	
175	1408 0538	IC - SI8301L	
176	1408 0654	IC - SI8203L	
177	1600 0239	Resistor - 0.47OHM 1/8W ±5%	
178	1604 1359	Capacitor - 220µF 10V	
179	1604 1389	Capacitor - 470µF 50V	
180	1605 0141	Capacitor - 4700PF 50V	
181	1610 0073	Resistor - 12KOHM 1/8W ±5%	

Index No.	Part No.	Description	Q'ty Per Assembly
182	1107 0409	Fuse 1A	

5. DF HARNESS (A418)

August 31, '89



5. DF HARNESS (A418)

August 31, '89

Index No.	Part No.	Description	Q'ty Per Assembly
1	A418 5811	DF Main Harness	1

Index No.	Part No.	Description	Q'ty Per Assembly
101	1100 1089	Socket - Mate-N-Lock	
102	1100 1147	Socket - Mate-N-Lock	
103	1100 1169	Fastening Receptacle	
104	1100 1190	Socket - Mate-N-Lock	
105	1100 1240	Socket - Mate-N-Lock	
106	1100 1327	Contact	
107	1100 1328	Contact	
108	1100 1348	Pin Contact	
109	1102 1089	Connector - 3P	
110	1102 1291	Connector - 8P	
111	1102 1350	Connector - 5239-2P	
112	1102 1408	Receptacle Housing	
113	1102 1515	Connector - 2P	
114	1102 1517	Connector - 4P	
115	1102 1910	Connector - 2P	
116	1102 1912	Connector - 4P	
117	1102 1914	Connector - 6P	
118	1102 1964	Connector - 2P	
119	1102 1965	Connector - 3P	
120	1102 1966	Connector - 4P	
121	1102 1970	Connector - 2P	
122	1102 1971	Connector - 3P	
123	1103 0659	Connector - 34P	

PARTS INDEX

Parts No.	Description	Page and Index No.
A418 1055	Middle Drive Shaft	9-10
A418 1125	Belt Unit Stopper	9-92
A418 1129	Harness Cover	9-87
A418 1139	Left Frame	9-78
A418 1140	Exit Guide Plate	9-44
A418 1141	Motor Bracket	9-15
A418 1142	Front Side Plate - Exit Drive	9-6
A418 1144	Bracke Switch Bracket	5-6
A418 1145	Collar - M6	9-17
A418 1146	Rubber Bushing - M6	9-18
A418 1147	Seal - M10x1	9-45
A418 1148	Belt Tightener	9-82
A418 1153	Spring - Flip Scale	5-47
A418 1154	Grip Plate	5-10
A418 1158	Spacer - M6.5x1	9-16
A418 1159	Spacer - M4.5x1	7-32
A418 1160	DF Harness Bracket	5-27
A418 1163	Idle Roller	9-72
A418 1164	Mylar Seal 15x12x0.1	9-90
A418 1180	Original Exit Guide	5-15
A418 1185	Austatics Brush	5-48
A418 1186	Grounding Plate	9-88
A418 1230	DF Cover	5-4
A418 1231	Left Supporter	5-8
A418 1232	Right Supporter	5-9
A418 1234	Display Panel	5-3
A418 1236	Glip - Cover	5-12
A418 1237	Display Board Bracket	5-23
A418 1240	Cushion 21x20x2	9-89
A418 1241	Display Panel Bracket	5-54
A418 1251	Original Table Guide	5-24
A418 1252	Original Table Cover	5-43
A418 1253	Front Original Guide	5-31
A418 1254	Rear Original Guide	5-29
A418 1255	Original Table Extender	5-41

Parts No.	Description	Page and Index No.
A418 1260	Cork Pad	5-33
A418 1261	Front Table Bracket	5-40
A418 1262	Rear Table Bracket	5-39
A418 1270	Right Hinge	5-21
A418 1271	Right Hinge Spring - Outer	5-49
A418 1272	Right Hinge Spring - Inner	5-50
A418 1290	Left Hinge	5-20
A418 1291	Left Hinge Spring	5-51
A418 1295	Lift Switch Actuator Plate	5-19
A418 1300	Interface Harness Bracket	5-28
A418 1307	DF Fixing Plate	5-18
A418 1801	Decal - Misfeed Removal	5-44
A418 1805	Decal Jan Removal	5-44
A418 2102	Front Adjusting Plate	7-75
A418 2103	Rear Adjusting Plate	7-76
A418 2226	Rubber Seal - 10x10x3	7-72
A418 2230	Front Feed-in Guide	7-9
A418 2231	Rear Feed-in Guide	7-22
A418 3117	Glip Scale - LT/LDG	5-14
A418 3127	Flip Scale - A3/A4	5-14
A418 3217	Original Feed Table - LT/LDG	5-30
A418 3227	Original Feed Table - A3/A4	5-30
A418 3253	Spring - Inverter Guide Plate	9-93
A418 4002	Decal - DIP Switch	5-45
A418 5615	DF Main Board	11-*
A418 5615	DF Main Board	5-1
A418 5618	IC - M8M2764-30	11-6
A418 5621	Display Board	5-22
A418 5701	Fiber Connector	5-53
A418 5804	Interface Harness	5-2
A418 5807	Fiber Optics Harness	5-52
A418 5811	DF Main Harness	13-1
A418 5811	Main Harness	9-19
A418 5821	Grounding Wire	9-57
A418 8610	Installation Procedure - English	5-*

Parts No.	Description	Page and Index No.
A418 8615	Installation Procedure - 5 Language	5-*
A418 9001	Turn Roller Ring (8pcs/set)	9-67

Parts No.	Description	Page and Index No.
A409 1133	Front Frame	9-58
A409 1138	Exit Roller Bracket	9-84
A409 1139	Clamp - Discharge Brush	9-85
A409 1142	Turn Roller Shaft	9-65
A409 1143	Pulley - 50T	9-23
A409 1147	Idle Roller Arm	9-75
A409 1149	Guide Plate - Inverter	9-71
A409 1150	Spring Anchor	9-56
A409 1152	Inverter Gate	9-70
A409 1153	Spring - Inverter Guide Plate	9-35
A409 1154	Bracket - Inverter Gate Solenoid	9-34
A409 1156	Spring - Lever - Reverse	9-86
A409 1161	Pulley - 21T	9-14
A409 1162	Collar - Inverter Solenoid	9-68
A409 1191	Timing Belt - 83mm	9-8
A409 1192	Pulley - 15T	9-7
A409 1195	Exit Drive Shaft	9-5
A409 1197	Spacer - 10x16x1.6mm	9-3
A409 1198	Rear Side Plate - Exit Drive	9-1
A409 1201	Gear - 46T	9-4
A409 1234	Exit Motor - DC 9W	9-2
A409 5511	Inverter Solenoid	9-37
A409 5710	Fiber Connector	11-4
A411 2531	Knob Cap	7-57
A419 1120	Original Feed Belt	9-46
A419 2726	Rack - Front Original Guide	5-38
A419 2728	Rack - Rear Original Guide	5-37
A419 3355	Right Frame	7-48
A419 3877	Shoulder Screw - Scale	5-16
A422 5350	IC - HCTL-3	11-7
5053 0223	Bushing - 8mm	7-18
5053 0447	Bushing - 6mm	7-15
5053 0447	Bushing - 6mm	9-79
5056 0509	Nut Plate - Micro Switch	5-5
5201 2832	Feed Clutch Spring	7-61

Parts No.	Description	Page and Index No.
5215 5230	Photointerrupter - L-Type	9-42
5403 2049	Spring Anchor	7-56
5408 3253	Spring - Detent Arm	9-25
5413 1875	Knob Screw	7-66
5413 1882	Step Screw	9-74
5413 2298	Stepped Screw - M4	7-55
5413 2298	Stepped Screw - M4	9-61
5443 2657	Gear - 28T	5-34
5443 2660	Spacer - 6x22x0.5mm	5-36
5443 2713	Wave Washer	5-35
5446 2824	Screw - Duplex Guide Plate	7-27
5446 2824	Screw - Duplex Guide Plate	9-77
5446 6365	Spring - Discharge Roller	9-76
5447 2681	Snap Ring	7-10
5875 1540	Shaft - Floating Roller	9-53
5875 5501	Sensor Pad	7-68
5875 5510	Shoulder Screw - M5	5-17
5886 3114	Roller Cover	5-26
5894 2163	Center Roller	7-20
5894 2171	Original Feed Roller	7-12
5894 2174	Timing Belt	7-14
5894 2176	Spring - Detent Arm	7-26
5894 2181	Upper Separation Roller	7-8
5894 2183	Lower Separation Roller	7-53
5894 2186	Separation Roller Pulley	7-17
5894 2229	Solenoid Pin	7-29
5894 2229	Solenoid Pin	9-28
5894 2264	Collar	7-51
5894 2293	Spring - Original Stopper	7-43
5894 2412	Roller	7-70
5894 2413	Relay Roller Shaft	7-71
5894 2747	Mylar - Original Guides	5-32
5918 1556	Belt Stay	9-48
5918 2101	Separation Roller Shaft	7-52
5918 2103	Eccentric Cam Shaft	7-54

Parts No.	Description	Page and Index No.
5918 2105	Eccentric Cam	7-39
5918 2106	One Way Bearing Lever	7-45
5918 2108	Adjusting Plate	7-60
5918 2150	Feed-in Stopper	7-47
5918 2155	Registration Roller	7-1
5918 2156	Gear - 24T	7-40
5918 2158	Pulley - 25T	7-34
5918 2159	Gear - 24T	7-36
5918 2163	Clutch Spring	7-31
5918 2164	Clutch Sleeve	7-35
5918 2168	Release Lever Shaft	7-6
5918 2170	Front Release Lever	7-59
5918 2172	Rear Release Lever	7-7
5918 2210	Collar - 6mm	7-58
5918 2215	Pick-up Roller Bracket	7-19
5918 2220	Pick-up Roller Shaft	7-11
5918 2223	Pulley - 24T	7-13
5918 2224	Feed Roller Shaft	7-16
5918 2230	Gear - 45T	7-41
5918 2250	Sensor Actuator	7-46
5918 2252	Right Stay	7-50
5918 2260	Feed-in Sensor Feeler	7-49
5918 2270	Pulley - 15T	9-22
5918 2274	Timing Belt Tightener	9-40
5918 2285	Tightener Stud	9-41
5918 2289	Spring	9-36
5918 2295	Pulley - 79T	9-20
5918 2313	Pulley - 30T	9-13
5918 2314	Timing Belt - MM63	9-12
5918 2316	Timing Belt - P2M 208	9-21
5918 2317	Gear - 19T	9-11
5918 2318	Gear - 19T	9-83
5918 2324	Solenoid Bracket	9-26
5918 2325	Stopper Lever	9-29
5918 2327	Release Lever	9-38

Parts No.	Description	Page and Index No.
5918 2330	Clutch Lever	9-24
5918 2340	Release Arm	7-38
5918 2349	Feed-in Motor Ass'y - DC24V	9-31
5918 2355	Feed-in Motor Bracket	9-39
5918 2370	Pick-up Solenoid Bracket	7-30
5918 2371	Pick-up Lever	7-25
5918 2372	Stopper Lever	7-33
5918 2372	Stopper Lever	9-33
5918 2373	Stopper Bracket	7-28
5918 2375	Pick-up Control Shaft	7-21
5918 2380	Sensor Bracket	9-43
5918 2385	Harness Bracket Ass'y	9-30
5918 2520	Upper Feed-in Guide	7-5
5918 2610	Lower Feed-in Guide	7-62
5918 2615	Spring Plate	7-64
5918 2616	Middle Spring Plate	7-65
5918 2621	Entrance Guide	7-67
5918 2623	Paper Guide Mylar	7-69
5918 2623	Paper Guide Mylar	9-91
5918 2624	Seal - 12x17x0.7mm	7-63
5918 2725	Mylar - Feed-in	5-25
5918 2770	Extender Spring Plate	5-42
5918 2781	Decal - Feed-in	7-42
5918 3007	Belt Unit Holder - A	9-60
5918 3040	Shoulder Screw - M4	5-46
5918 3092	Belt Unit Holder - B	9-63
5918 3125	Stud - M4	9-55
5918 3365	Belt Release Bracket	9-62
5918 3369	Belt Drive Roller	9-47
5918 3370	Belt Roller	9-64
5918 3380	Spring - Floating Roller	9-52
5918 3381	Floating Roller	9-50
5918 3382	Belt Stopper	9-49
5918 3383	Holder - Floating Roller	9-51
5918 3385	Belt Unit Stay	9-54

Parts No.	Description	Page and Index No.
5918 3394	Seal - 15x30mm	5-13
5918 3395	Front Belt Unit Plate	9-59
5918 3536	Exit Roller	9-69
5918 3562	Antistatic Brush	9-73
5918 3585	Upper Exit Roller	9-80
5918 5501	Stopper Solenoid	7-23
5918 5515	Pick-up Solenoid	7-24
5918 5516	Release Solenoid	9-32
5918 5525	Registration Solenoid	9-27
5918 5631	Paper Suze Sensor	7-2
5918 5722	Photosensor	7-3
5918 5722	Photosensor	9-81
5918 5821	Registration Sensor Harness	7-4
5936 2480	Magnetic Catch Ass'y	5-11
5936 2542	Turn Pulley	9-66
5936 5221	Heat Sink	11-5
5936 5501	Transport Drive Motor - DC 21W	9-9

Parts No.	Description	Page and Index No.
0313 0040W	Philips Pan Head Screw - M3x4	7-110
0313 0040W	Philips Pan Head Screw - M3x4	9-118
0313 0060W	Philips Pan Head Screw - M3x6	7-109
0313 0060W	Philips Pan Head Screw - M3x6	9-101
0313 0080W	Philips Pan Head Screw - M3x8	9-128
0313 0160W	Philips Pan Head Screw - M3x16	5-109
0314 0040W	Philips Pan Head Screw - M4x4	9-105
0314 0060W	Philips Pan Head Screw - M4x6	5-102
0314 0060W	Philips Pan Head Screw - M4x6	7-108
0314 0060W	Philips Pan Head Screw - M4x6	9-113
0314 0080M	Philips Pan Head Screw - M4x8	5-108
0314 0100W	Philips Pan Head Screw - M4x10	5-104
0314 0100W	Philips Pan Head Screw - M4x10	9-123
0315 0100W	Philips Pan Head Screw - M5x10	5-105
0324 0120W	Philips Sunken Head Screw - M4x12	5-103
0344 0060D	Philips Truss Head Screw - M4x6	5-101
0434 0060W	Tapping Screw - M4x6	5-112
0434 0080W	Tapping Screw - M4x8	5-107
0574 0040E	Hexagon Headless Set Screw - M4x4	7-112
0574 0040E	Hexagon Headless Set Screw - M4x4	7-116
0574 0040E	Hexagon Headless Set Screw - M4x4	9-114
0632 0100E	Pin - 2x10mm	7-103
0632 0100E	Pin - 2x10mm	9-103
0632 0100G	Pin 2x10mm	9-120
0633 0120E	Spring Pin - M3x12	9-127
0633 0160E	Pin - 3x16mm	7-115
0720 0025E	Retaining Ring - M2.5	7-107
0720 0025E	Retaining Ring - M2.5	7-111
0720 0025E	Retaining Ring - M2.5	9-119
0720 0030E	Retaining Ring - M3	7-105
0720 0030E	Retaining Ring - M3	9-106
0720 0040E	Retaining Ring - M4	5-110
0720 0040E	Retaining Ring - M4	7-113
0720 0040E	Retaining Ring - M4	9-108
0720 0050E	Retaining Ring - M5	7-106

Parts No.	Description	Page and Index No.
0720 0050E	Retaining Ring - M5	9-107
0720 0060E	Retaining Ring - M6	7-104
0720 0060E	Retaining Ring - M6	9-117
0720 0070E	Retaining Ring - M7	7-117
0720 0070W	Retaining Ring - M7	9-111
0741 3505	Ball Bearing - 5x10x4mm	9-104
0741 3506	Ball Bearing - 6x12x4mm	9-110
0742 3808	Ball Bearing - 8x16mm	9-116
0742 3905	Ball Bearing - 5x13x4mm	9-102
0805 3145	Ball Bearing - 6x12x4mm	7-115
0805 3145	Ball Bearing - 6x12x4mm	9-125
0805 3291	Ball Bearing - 8x16x5mm	9-122
0951 4006W	Philips Screw With Flat Washer - M4x6	9-122
0951 4010W	Philips Screw With Flat Washer - M4x10	5-106
0965 3010W	Tapping Screw With Flat Washer - M3x10	7-101
0965 4006W	Tapping Screw - M4x6	7-102
0965 4008W	Tapping Screw With Flat Washer - M4x8	7-118
1100 1089	Socket - Mate-N-Lock	13-101
1100 1147	Socket - Mate-N-Lock	13-102
1100 1169	Fastening Receptacle	13-103
1100 1190	Socket - Mate-N-Lock	13-104
1100 1240	Socket - Mate-N-Lock	13-105
1100 1327	Contact	13-106
1100 1328	Contact	13-107
1100 1348	Pin Contact	13-108
1101 0328	Connector Pin Contact	11-101
1102 0958	Connector - 2P	11-102
1102 1089	Connector - 3P	13-109
1102 1291	Connector - 8P	13-110
1102 1350	Connector - 5239-2P	13-111
1102 1408	Receptacle Housing	13-112
1102 1515	Connector - 2P	13-113
1102 1517	Connector - 4P	13-114
1102 1910	Connector - 2P	13-115
1102 1912	Connector - 4P	13-116

Parts No.	Description	Page and Index No.
1102 1914	Connector - 6P	13-117
1102 1964	Connector - 2P	13-118
1102 1965	Connector - 3P	13-119
1102 1966	Connector - 4P	13-120
1102 1970	Connector - 2P	13-121
1102 1971	Connector - 3P	13-122
1103 0659	Connector - 34P	13-123
1103 0881	Connector - 4P	11-103
1103 1726	Connector - 4P	11-104
1103 1728	Connector - 6P	11-105
1103 1878	Connector - 2P	11-106
1103 3023	Connector - 34P	11-107
1103 3029	Connector - 2P	11-108
1104 0271	LSI Socket - 42P	11-109
1104 0333	Fuse Holder	11-110
1105 0005	Nylon Clip - 3N	7-114
1105 0016	Nylon Clip - 4N	9-121
1105 0087	Clamp	9-109
1105 0108	Nylon Clip	9-126
1106 0134	Universal Bushing - 2.4mm	5-111
1107 0409	Fuse 1A	11-182
1107 0413	Fuse - 3A	11-111
1204 0883	DIP Switch	11-112
1204 1319	Micro Switch	5-7
1204 1385	Push Switch	11-113
1400 0100	Transistor - 2SA683	11-114
1401 0282	Transistor - 2SB20	11-115
1401 0329	IC - MP4503	11-116
1403 0308	LED - TLR-102A	11-118
1403 0388	Photocoupler - QN3111	11-119
1407 0602	IC - TC4040BP	11-174
1407 0604	IC - TC4049BP	11-120
1407 1026	IC - SN74LS373N	11-121
1407 1334	IC - UPD7810G	11-123
1407 1348	IC - TD62304P	11-124

Parts No.	Description	Page and Index No.
1407 1535	IC - TD62308AP	11-125
1408 0408	IC - PST518A	11-127
1408 0521	IC - M51971L	11-128
1408 0538	IC - SI8301L	11-175
1408 0578	IC - HAL7339	11-129
1408 0654	IC - SI8203L	11-176
1503 0070	Ceramic Oscillator - 10MHz	11-130
1600 0239	Resistor - 0.470HM 1/8W ±5%	11-177
1600 0681	Resistor - 5100HM ± 5% 1W	11-133
1601 1732	Resistor - 3900HM 1W	11-134
1601 7326	Resistor Array - 10KOHM	11-135
1601 8145	Variable Resistor - 5KOHM	11-136
1601 8147	Variable Resistor - 10KOHM 0.5W	11-137
1601 8148	Variable Resistor - 20KOHM	11-138
1601 8157	Variable Resistor - 100KOHM	11-139
1602 0953	Coil - 800µH 2.5A	11-140
1604 1358	Capacitor - 1000µF 10V	11-141
1604 1359	Capacitor - 220µF 10V	11-178
1604 1378	Capacitor - 1µF 50V	11-142
1604 1379	Capacitor - 2.2µF 50V	11-143
1604 1380	Capacitor - 3.3µF 50V	11-144
1604 1381	Capacitor - 4.7µF 50V	11-145
1604 1389	Capacitor - 470µF 50V	11-179
1604 1390	Capacitor - 1000µF 50V	11-149
1605 0141	Capacitor - 4700PF 50V	11-180
1606 0658	Capacitor - 0.1µF 50V	11-150
1606 1184	Capacitor - 27PF 50V	11-151
1606 1348	Capacitor - 0.022µF 50V	11-152
1606 1452	Capacitor - 0.01µF 50V	11-154
1610 0035	Resistor - 1000HM 1/8W ±5%	11-155
1610 0047	Resistor - 3300HM 1/8W ±5%	11-156
1610 0057	Resistor - 1.5KOHM 1/8W ±5%	11-158
1610 0061	Resistor - 2.2KOHM 1/8W ±5%	11-159
1610 0065	Resistor - 3.3KOHM 1/8W ±5%	11-160
1610 0067	Resistor - 4.7KOHM 1/8W ±5%	11-161

Parts No.	Description	Page and Index No.
1610 0071	Resistor - 10KOHM +5%	11-163
1610 0073	Resistor - 12KOHM 1/8W +5%	11-181
1610 0079	Resistor - 22KOHM 1/8W +5%	11-164
1610 0107	Resistor - 1MOHM 1/8W +5%	11-165
1610 0286	Capacitor - 100PF 50V ± 5%	11-166
1611 4103	Resistor - 10KOHM 1/4T +5%	11-167
1611 4229	Resistor - 2.2OHM 1/4W ± 5%	11-168
1611 4272	Resistor - 2.7KOHM 1/4T +5%	11-169
1611 4330	Resistor - 330OHM 1/4T +5%	11-170
1611 4393	Resistor - 39KOHM 1/4T +5%	11-171
1611 4472	Resistor - 4.7KOHM 1/4T +5%	11-172
1611 4563	Resistor - 56KOHM 1/4T +5%	11-173

Parts No.	Description	Page and Index No.
-----------	-------------	--------------------